

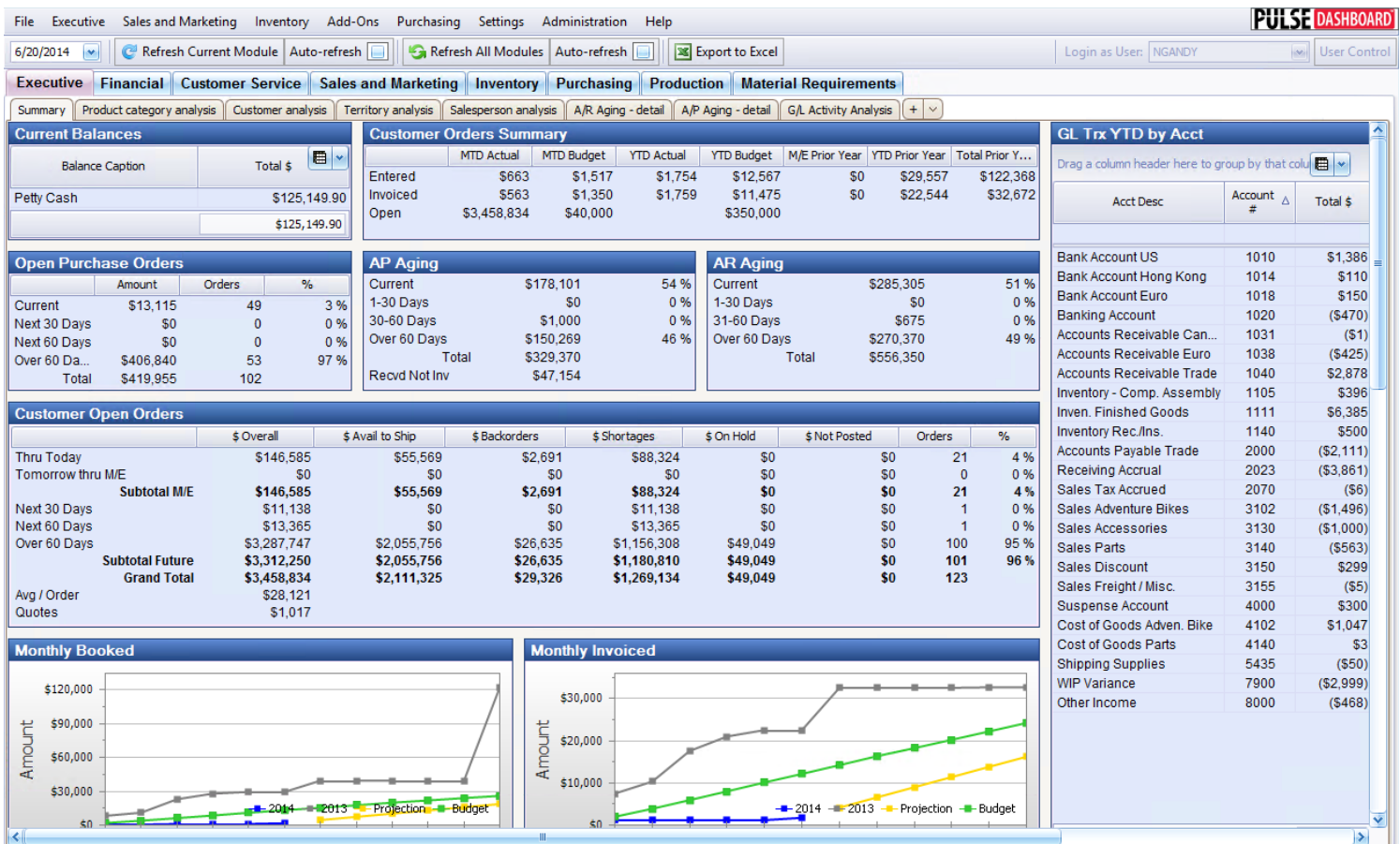
## Take charge of your business with PULSE Dashboard Reporting Software

### Executive Module

PULSE DASHBOARD is revolutionary software that lets you leverage your Macola® investment in a new way —with real-time display of vital business metrics, and detailed analysis with the click of a mouse. You will be able to track critical factors for your business, on-screen and real-time. Other PULSE modules include Financial, Customer Service, Sales and Marketing, Inventory, Purchasing, Production and Material Requirements.

### PULSE Dashboard adds value to your Macola® investment

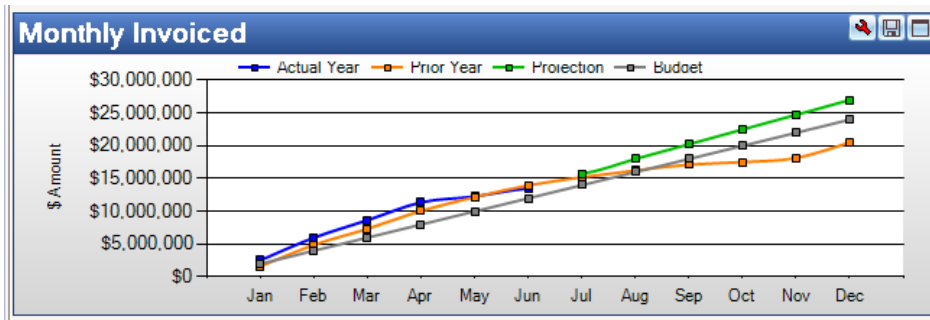
- Manage with real-time data, on-screen, company-wide, all the time
- Inconsistencies between reports from different departments are eliminated
- Important metrics not found in standard Macola® software
- One-click drill-down to view details & One-click report writer generates custom reports
- Export all data to Excel/printer/PDF/e-mail
- Installation & training in an afternoon



## The Executive module offers:

- Customer bookings and shipments tracking for this year vs. last year vs. budget
- Sales margin tracking
- Orders to be shipped by the end of the month to maximize revenue
- Aging of A/R, A/P and purchase orders
- Key balance sheet accounts monitoring
- General ledger accounts for vendors, department, employees and expense monitoring
- Custom Tabs allow you to view the performance of key customers, customer types, items, product categories, shipping locations, sales persons, sales territories and outside agents.

## PULSE tracks sales & bookings by day/month vs. last year vs. budget



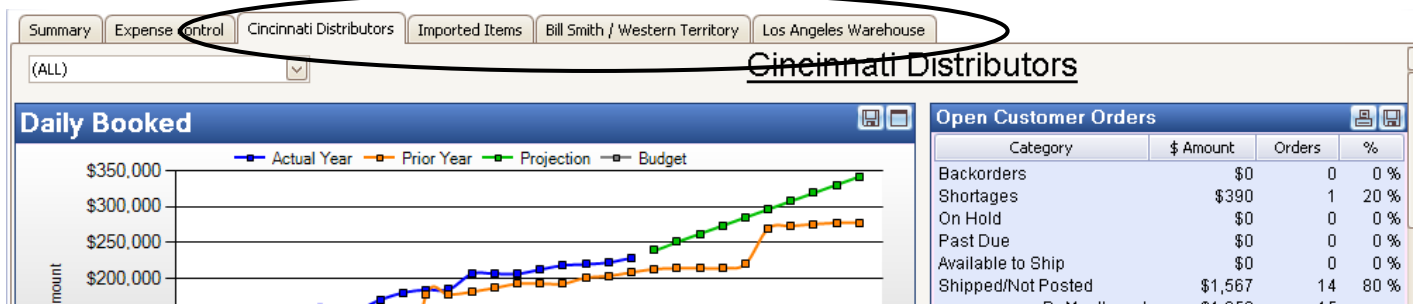
## PULSE focuses your attention on orders to be shipped to maximize sales

To maximize your sales each month, it is important to know the status of each unshipped order. PULSE allows you to better focus on each category of unshipped orders. For example, someone can be assigned to research why some orders were not shipped on time.

Open Customer Orders								
	\$ Overall	\$ Avail to Ship	\$ Backorders	\$ Shortages	\$ On Hold	\$ Not Posted	Orders	%
Thru Today	\$97,193	\$37,597	\$28,566	\$13,540	\$0	\$17,490	36	5 %
Tomorrow thru M/E	\$21,082	\$2,090	\$5,274	\$13,717	\$0	\$0	53	1 %
Subtotal M/E	\$118,274	\$39,687	\$33,840	\$27,257	\$0	\$17,490	114	
Next 30 Days	\$431,421	\$98,369	\$24,371	\$211,433	\$0	\$97,248	660	21 %
Next 60 Days	\$825,517	\$314,982	\$0	\$509,440	\$0	\$1,094	985	39 %
Over 60 Days	\$729,245	\$209,443	\$0	\$519,802	\$0	\$0	28	35 %
Subtotal Future	\$1,986,183	\$622,795	\$24,371	\$1,240,675	\$0	\$98,342	1,652	
Grand Total	\$2,104,457	\$662,482	\$58,211	\$1,267,932	\$0	\$115,832	1,760	
Avg \$ / order	\$1,196							
Quotes	\$0							

## PULSE offers Custom Tabs

In addition to the summary screen, you can create custom tabs to display the performance of selected customers, customer types, product categories, locations, sales persons, sales territories, etc.

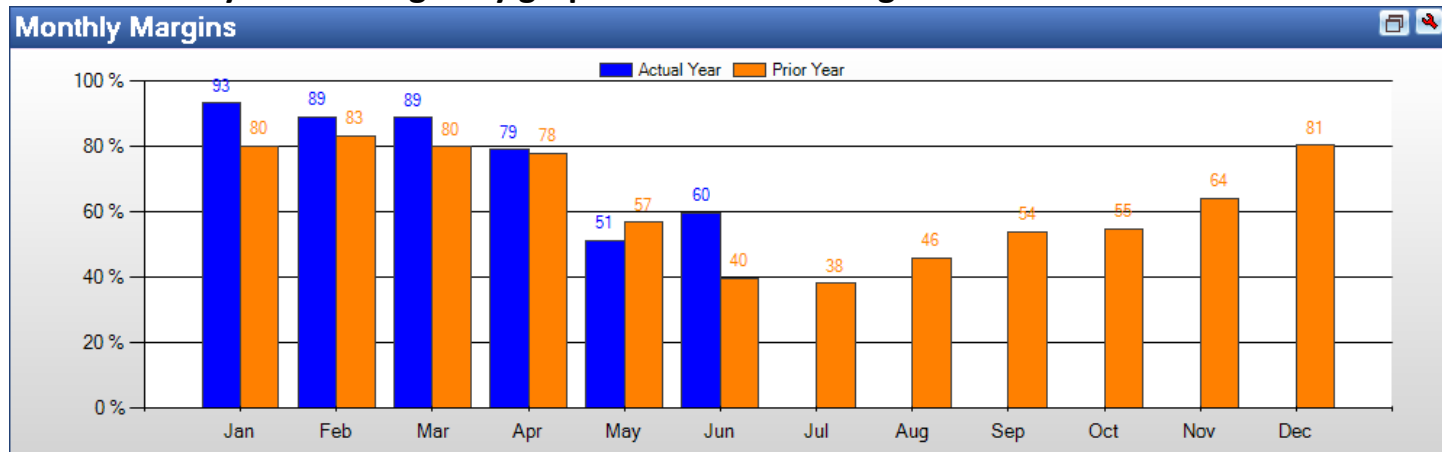


## PULSE offers Expense Account monitoring

You select the accounts you want to monitor. You can drill-down into the details, choose the columns to be displayed and print/export to Excel/e-mail the results.

Account Description <span>△</span>							
Expense control							
Account #	Account Description <span>△</span>	Job #	Date	\$ Amount	PKG	Customer/Vendor #	Customer/Vendor Name
Employee supplies \$61,480							
Roof repairs \$8,322							
Truck repairs \$8,696							
30100-	Truck repairs		1/30/2008	\$548	AP		
30100-	Truck repairs		1/31/2008	\$840	AP		
30100-	Truck repairs		1/31/2008	\$1,244	AP		
30100-	Truck repairs		2/13/2008	\$222	AP		
30100-	Truck repairs		2/29/2008	\$420	AP		
30100-	Truck repairs		3/31/2008	\$373	AP		
30100-	Truck repairs		3/31/2008	\$194	AP		
30100-	Truck repairs		4/18/2008	\$289	AP		
30100-	Truck repairs		4/30/2008	(\$9)	AP		
30100-	Truck repairs		4/30/2008	\$441	AP		

## PULSE allows you to enlarge any graph for better viewing



## PULSE allows you to monitor orders booked & shipped real-time during the day

Orders - June, 2008					
Booked		Invoiced		Day	
\$ Amount	Orders	\$ Amount	Orders		
				1	
\$38,176	53	\$84,425	35	2	
\$22,561	25	\$11,235	12	3	
\$79,804	35	\$19,498	24	4	
\$8,617	13	\$135,216	34	5	
\$120,573	22	\$57,804	36	6	
				7	
				8	
\$34,680	46	\$97,172	27	9	
\$35,136	28	\$211,405	37	10	
\$23,405	31	\$58,585	25	11	
\$80,100	14	\$64,355	35	12	
\$38,538	23	\$58,355	27	13	
				14	
				15	
\$34,063	48	\$85,358	29	16	
\$10,154	16	\$102,113	16	17	
\$6,423	10	\$24,017	34	18	
\$55,217	23	\$48,792	21	19	
\$45,768	32	\$158,940	19	20	
\$633,213	419	\$1,217,269	411	Subtotals	

## PULSE Dashboard offers One-click drill-down and custom report writer

Pulse offers 'One-click drill-down' on any screen or graph to view supporting details. The 'One-click custom report writer' allows each user to quickly add or remove columns, change sorting and export the results to Excel/printer/PDF/e-mail in seconds. Anyone in your company can now generate custom views.

The screenshot displays the PULSE Dashboard interface. At the top, a summary table for 'AR Aging' is shown. Below it, a detailed report for 'AR Aging (Over 60 Days)' is displayed, filtered for 'Doc Due Dt between 02/03/1987 and 04/20/2014'. The report includes a list of customers and their invoice amounts, with a total of \$270,369.94. A second table shows a drill-down for a specific customer, 'Family Bike Shop', listing invoice numbers, transaction dates, document due dates, and invoice amounts, totaling \$9,672.56. Annotations with arrows point to various features: one points to the summary table, another to the drill-down table, and a third to the export icons in the top right corner.

Any screen may be exported to Excel, printed or emailed directly from PULSE Dashboard.

A single-click on any value or graph point displays a report of supporting details. Column selection, width and sorting can be customized by the

Current	\$285,305	51 %
1-30 Days	\$0	0 %
31-60 Days	\$675	0 %
Over 60 Days	\$270,370	49 %
Total	\$55	

Cust #	Cust Name	Inv \$
905	Village Bike Shop	\$110,564.84
903	Dirtworld.com Online Bike Store	\$58,150.10
902	Bike O'Rama	\$45,775.96
901	Outdoor Adventure Outlet	\$20,195.76
904	Cycle Scene	\$19,856.42
907	Family Bike Shop	\$9,672.56
908	Island Bike Trail	\$5,164.30
906	Bicycle Stop	\$999.00
		\$270,369.94

Inv #	Trx Doc Dt	Doc Due Dt	Inv \$
103	1/7/01	2/21/01	\$1,660.30
122	3/29/02	5/13/02	\$8,012.26
			\$9,672.56

Please call our PULSE support desk us with questions and comments at (513) 723-8095 or [Support@PULSEDashboard.com](mailto:Support@PULSEDashboard.com)

We encourage your phone calls with suggestions for making our software work better for your organization. We also offer custom modifications, but if your suggestions will be applicable to other users, they are made at no charge.

Visit [www.PULSEDashboard.com](http://www.PULSEDashboard.com)

Copyright Notice: © 2020 an unpublished work by Leahy Consulting Inc., Cincinnati, Ohio. Photocopying and sharing of this document is encouraged. Leahy Consulting is an independent ERP consulting firm and is not affiliated with Microsoft or Macola® software. We can be reached at (513) 723-8090.